



Architect's Conceptual View

SPECIFICATIONS

STRUCTURE

- Earthquake Resistant, R.C.C Frame Structure as per ISI codes.

FLOORING

- Living / Dining - Vitrified Tiles
- Master Bed Room - Laminated Wooden Floor
- Bed Room - Vitrified Tiles
- Toilet - Anti Skid Tiles
- Kitchen - Vitrified Tiles
- Balcony - Anti Skid Tiles

WALL & CEILING FINISH

- Internal Wall Finishes - Oil Bound Distemper
- External Wall Finishes - Texture Paint
- Toilet - Glazed Ceramic Tiles Upto 7'-0" height
- Kitchen - Ceramic Tiles 2'-0" Above Counter

COUNTER

- Kitchen - Granite Stone
- Toilet - Granite Stone

DOOR AND WINDOWS

- Door Frames - Seasoned Hardwood
- Door Shutters - Skin Moulded
- Windows - Powder coated Aluminium /UPVC Frames & Shutters

FITTINGS & FIXTURES

- White Sanitary Fixture with CP Fittings, Stainless Steel Kitchen Sink with drain Board.

ELECTRICAL FITTING

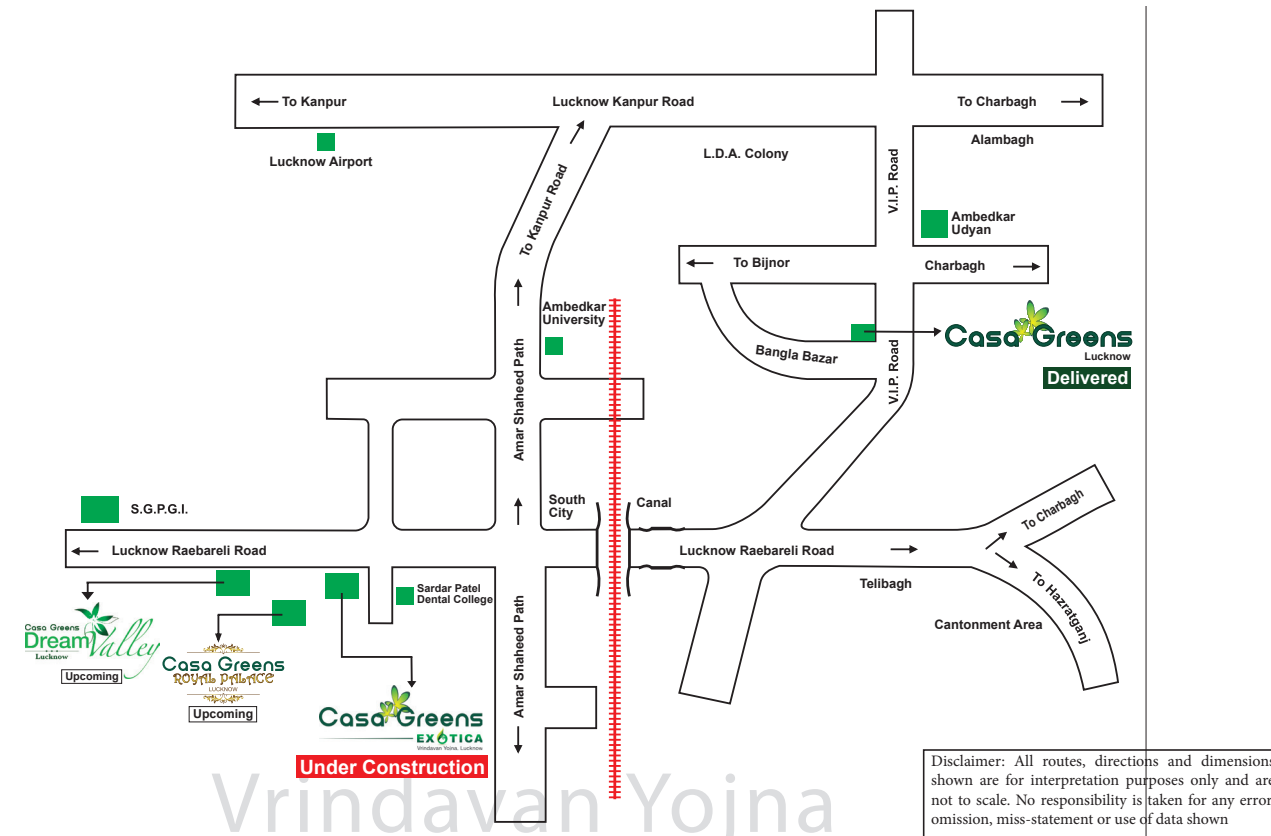
- Electrical wiring with Copper conductors in concealed Conduits as per ISI code, Switches and Sockets of reputed makes.

COMMON AREAS

- Staircases - Stone/Marble Flooring
- Corridor - Stone/Marble Flooring
- Entrance Lobby - Marble / Granite / Vitrified Tiles Flooring
- Internal Walls - OBD Paint



LOCATION MAP



LUCKNOW PROJECTS



DELHI NCR PROJECTS



Radhey Krishna Techno Build Pvt. Ltd.
(An ISO 9001 : 2008 Certified Company)

Site Office: GH-09, Sector-17, Vrindavan Yojna, Raebareli Road, Lucknow, U.P.-226025
Sales Enquiry: 9919500000-11111, 0522-4934000 (20 lines), contact@radheykrishnagroup.com
Regional Office: 601-602, Eldeco Corporate Tower, Vibhuti Khand, Gomti Nagar, Lucknow, U.P.-226010
Corporate Office: B-49, Sector-63, Noida, Gautam Budh Nagar, U.P.-201301, www.casagreens.com, www.radheykrishnagroup.com



It's a home one has always aspired for. CASA GREENS EXOTICA, situated in Vrindavan Yojna epitomizes lifestyle that closest to being perfect. Boasting of superb connectivity and meticulous planning, CASA GREENS EXOTICA has been designed to help you lead a life without care. In the company of greenery and humming birds no effort has been spared to offer you a home that's truly a splendor.



Architect's Conceptual View

HIGHLIGHTS

- Internal Garden with modern landscaping • Residential apartment • Flipped Club House
- Location on 24 mtr. road Near SGPGI Hospital • Adjoining 2 park
- Modern water bodies • Well ventilated apartments • Energy efficient flats
- 24 x 7 Multilevel security through CCTV surveillance • 100% power backup
- Dedicated Parking • Corner Plot

AMENITIES

- High-tech club • Yoga & Meditation • Gym • Table tennis • Billiards
- Children's play area • Grocery shop • Kids splash pool • Spa & Salon • Multipurpose Party Hall
- Laundry services

Masterpiece By Architect **Hafeez Contractor**

CONSULTANTS

Principal Architect
Architect Hafeez Contractor

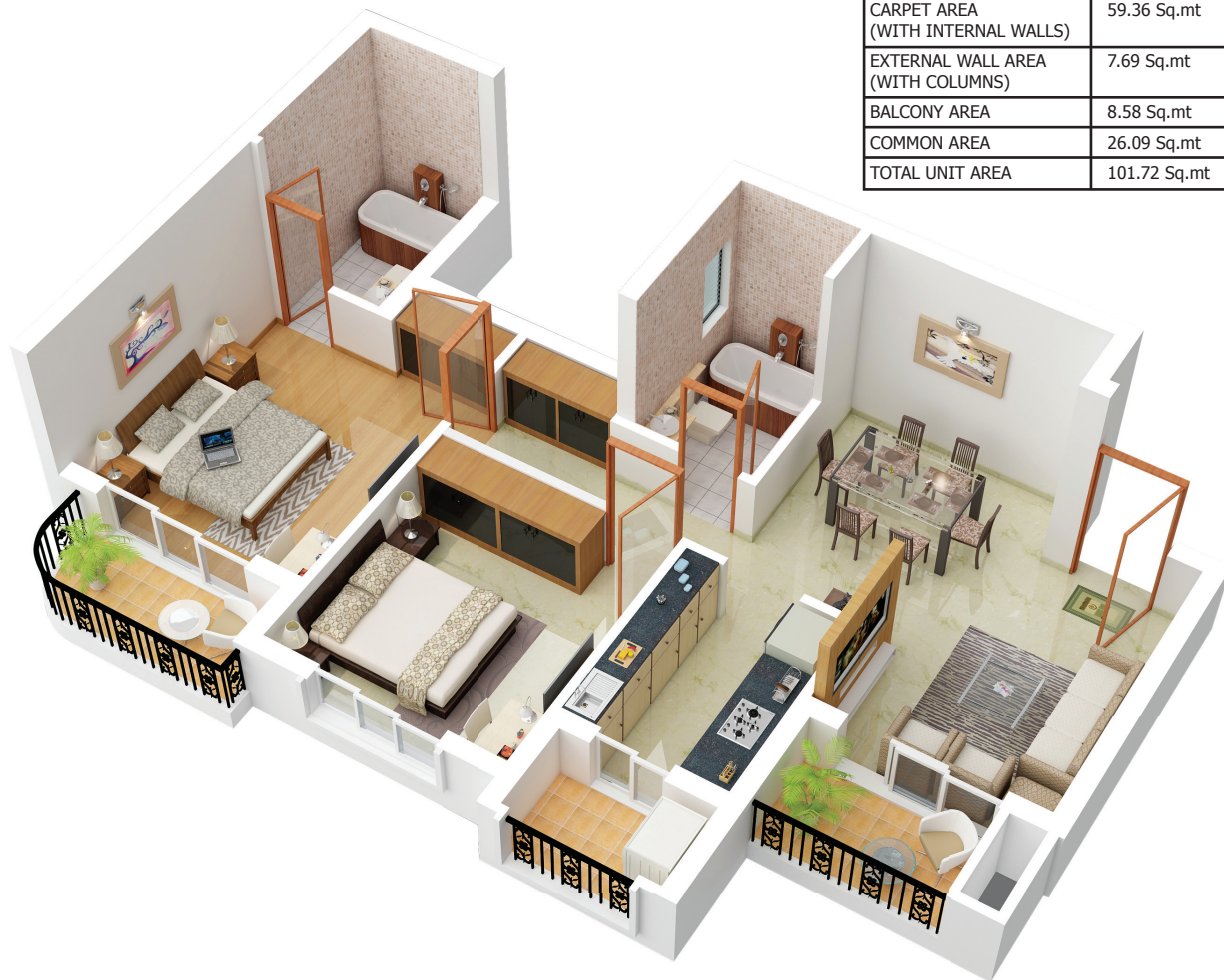
Resident Architect
GIAN P. MATHUR AND ASSOCIATES (P) LTD.
Design Architecture and Associate Technologies

*Conditions apply

UNIT PLAN

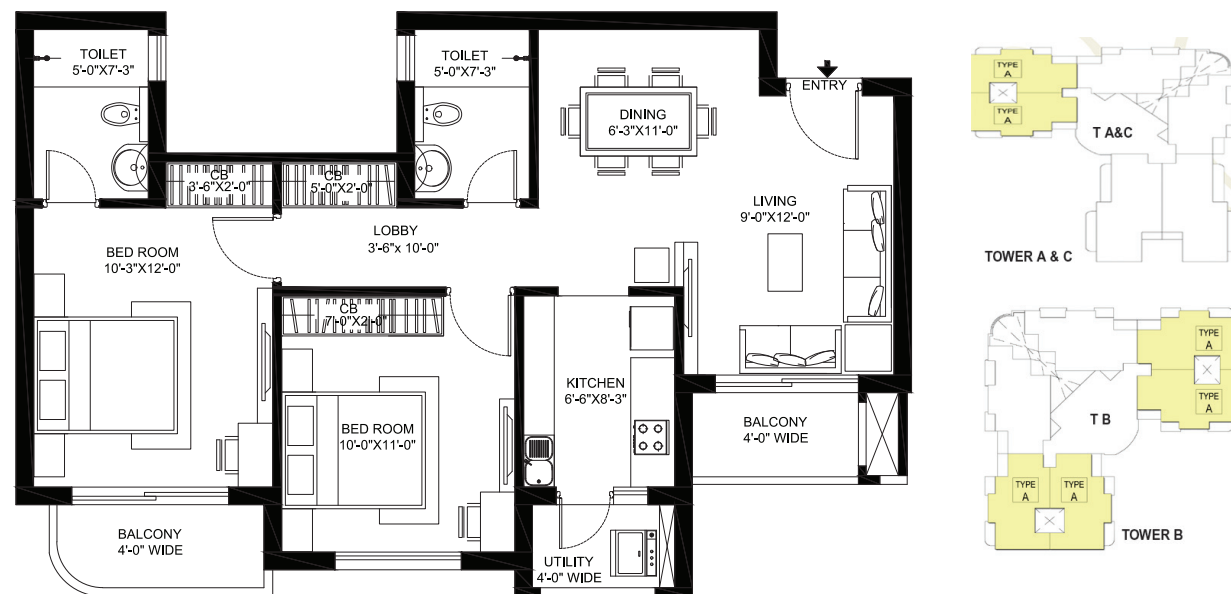
2 BHK + 2 Toilets + 3 Balconies

UNIT AREA = 101.72 Sq. Mt. /1095 Sq. Ft.



CARPET AREA (WITH INTERNAL WALLS)	59.36 Sq.mt	639 Sq.ft
EXTERNAL WALL AREA (WITH COLUMNS)	7.69 Sq.mt	83 Sq.ft
BALCONY AREA	8.58 Sq.mt	92 Sq.ft
COMMON AREA	26.09 Sq.mt	281 Sq.ft
TOTAL UNIT AREA	101.72 Sq.mt	1095 Sq.ft

Disclaimer: Visual impression of the unit, cannot be regarded as representation of the facts.



Disclaimer: While every attempt has been made to ensure the accuracy of the plans shown, all measurements, positioning, fixtures, fittings, finishing and any other data shown are an approximate interpretation for illustrative purposes only and are not to scale. No responsibility is taken for any error, omission, mis-statement or use of data shown. The company reserves the right to make changes in the plans, specifications, dimensions and elevations without any prior notice. 1 sq. ft. = 0.0929 sq. mt., 1 sq. mt. = 10.764 sq. ft., 1 ft. = 0.305 mt. and 1 mt. = 3.281 ft.

UNIT PLAN

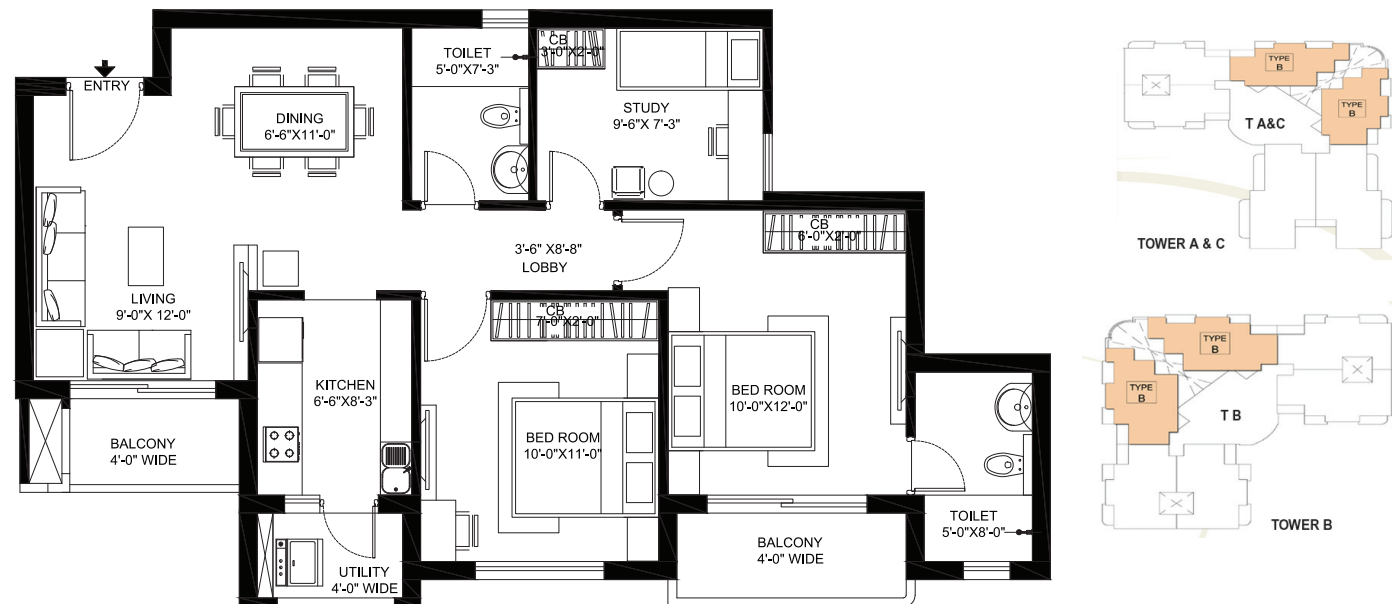
2 BHK + 2 Toilets + Study Room + 3 Balconies

UNIT AREA = 111.01 Sq. Mt. /1195 Sq. Ft.



CARPET AREA (WITH INTERNAL WALLS)	64.23 Sq.mt	691 Sq.ft
EXTERNAL WALL AREA (WITH COLUMNS)	8.83 Sq.mt	95 Sq.ft
BALCONY AREA	9.10 Sq.mt	98 Sq.ft
COMMON AREA	28.85 Sq.mt	311 Sq.ft
TOTAL UNIT AREA	111.01 Sq.mt	1195 Sq.ft

Disclaimer: Visual impression of the unit, cannot be regarded as representation of the facts.



Disclaimer: While every attempt has been made to ensure the accuracy of the plans shown, all measurements, positioning, fixtures, fittings, finishing and any other data shown are an approximate interpretation for illustrative purposes only and are not to scale. No responsibility is taken for any error, omission, mis-statement or use of data shown. The company reserves the right to make changes in the plans, specifications, dimensions and elevations without any prior notice. 1 sq. ft. = 0.0929 sq. mt., 1 sq. mt. = 10.764 sq. ft., 1 ft. = 0.305 mt. and 1 mt. = 3.281 ft.

UNIT PLAN

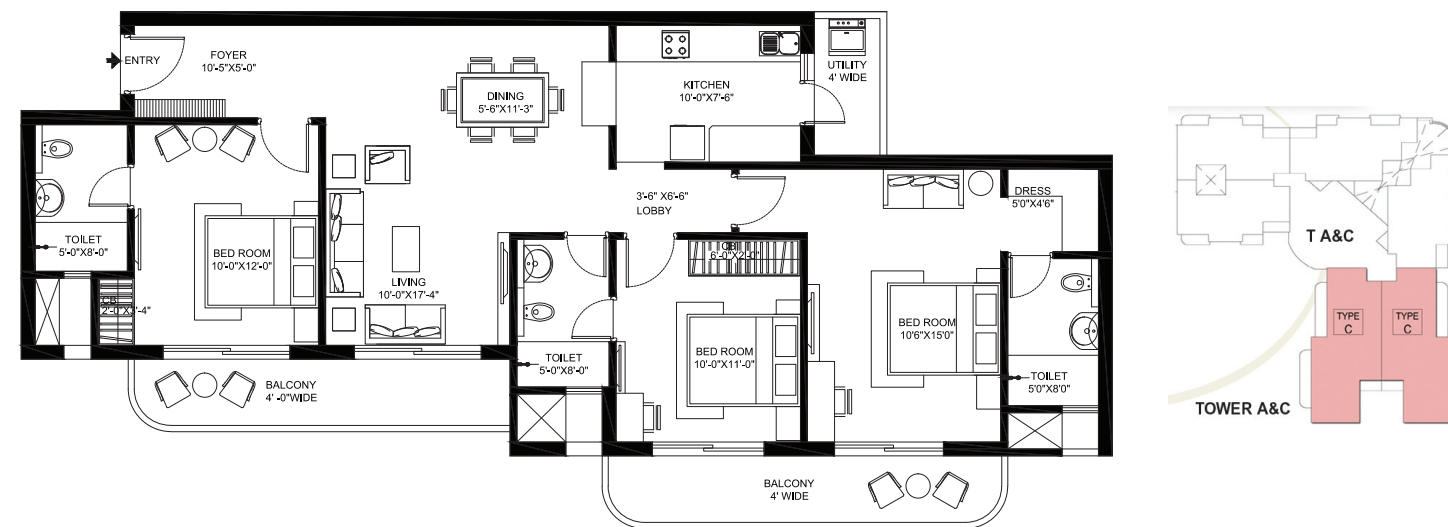
3 BHK + 3 Toilets + 3 Balconies

UNIT AREA = 157.47 Sq. Mt. /1695 Sq. Ft.



CARPET AREA (WITH INTERNAL WALL)	90.30 Sq.mt	972 Sq.ft
EXTERNAL WALL AREA (WITH COLUMN)	10.38 Sq.mt	112 Sq.ft
BALCONY AREA	16.03 Sq.mt	173 Sq.ft
COMMON AREA	40.76 Sq.mt	438 Sq.ft
TOTAL UNIT AREA	157.47 Sq.mt	1695 Sq.ft

Disclaimer: Visual impression of the unit, cannot be regarded as representation of the facts.



Disclaimer: While every attempt has been made to ensure the accuracy of the plans shown, all measurements, positioning, fixtures, fittings, finishing and any other data shown are an approximate interpretation for illustrative purposes only and are not to scale. No responsibility is taken for any error, omission, mis-statement or use of data shown. The company reserves the right to make changes in the plans, specifications, dimensions and elevations without any prior notice. 1 sq. ft. = 0.0929 sq. mt., 1 sq. mt. = 10.764 sq. ft., 1 ft. = 0.305 mt. and 1 mt. = 3.281 ft.

SITE PLAN



- AMENITIES**
- ENTRANCE GATE
 - DROP OFF AREA
 - RAMP
 - CLUB
 - KIDS SPLASH POOL
 - GARDEN
 - KIDS PLAY AREA
 - EXIT

- LEGEND**
- 2 BHK + 2 TOILETS + 3 BALCONIES (Yellow)
 - 2 BHK + 2 TOILETS + STUDY ROOM + 3 BALCONIES (Orange)
 - 3 BHK + 3 TOILETS + 3 BALCONIES (Green)